

Parallel

Blackout

This blackout fabric features a 2 x 2 weave pattern and features an acrylic foam coating for extra sturdiness and insulation. Visit swfcontract.com to request free samples.

Fire Classification: NFPA 701 TM#1

Bacteria and Fungal Resistance: ASTM G21 & ASTM E2180

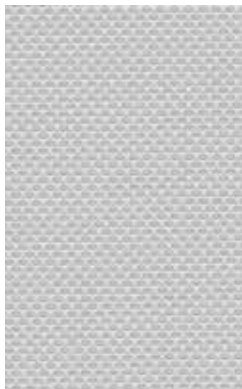
Railroading Available: Yes

Stocked: 118" wide

Fabric Content: other side



White
C9810



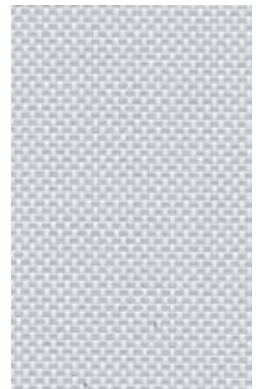
Linen/Fog
C9817



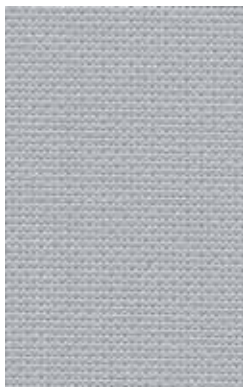
Linen
C9811



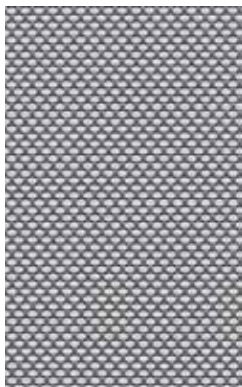
White/Linen
C9816



White/Fog
C9818



Smoke
C9812



Smoke/Platinum
C9819



Steel Grey
C9813



Ebony/Chocolate
C9814



Ebony
C9815

Parallel

Blackout Fabric Content

Parallel

Mesh Weight: 18.29 oz/yd²

Fabric Thickness: 0.03 in

#	Name	Fabric Content
C9810	White	55% PVC / 15% Polyester / 30% Acrylic Coating
C9817	Linen/Fog	55% PVC / 15% Polyester / 30% Acrylic Coating
C9811	Linen	55% PVC / 15% Polyester / 30% Acrylic Coating
C9816	White/Linen	55% PVC / 15% Polyester / 30% Acrylic Coating
C9818	White/Fog	55% PVC / 15% Polyester / 30% Acrylic Coating
C9812	Smoke	55% PVC / 15% Polyester / 30% Acrylic Coating
C9819	Smoke/Platinum	55% PVC / 15% Polyester / 30% Acrylic Coating
C9813	Steel Grey	55% PVC / 15% Polyester / 30% Acrylic Coating
C9814	Ebony/Chocolate	55% PVC / 15% Polyester / 30% Acrylic Coating
C9815	Ebony	55% PVC / 15% Polyester / 30% Acrylic Coating